

Professional Weather Station

Features

- **Plug and Play – Easy setup and operation**
- **48 sec data update, instantaneous average and peak**
- **Inside and outside temperature and humidity**
- **Wind Speed and Direction including average and gust**
- **Wind Chill and Dew point temperature display**
- **Barometric Pressure with last 12hr history**
- **Rain Gauge with last hour, day, week, month or total**
- **Built in data logging for 4080 readings: Unlimited with PC**
- **Settable Alarms and Touch Screen Operation**
- **300 Feet wireless range between Sensor and Controller**
- **Sensor battery life 2 years on 2 AA LR6 Alkaline batteries**
- **Free EasyWeather remote control Windows software**



ProWeatherStation™

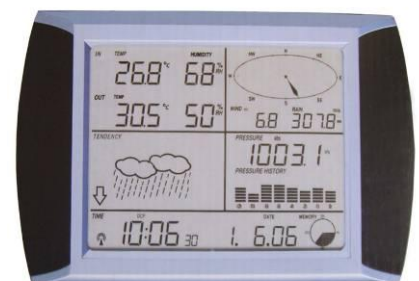
Applications

- **Weather Tracking and Forecasting**
- **Wind Turbine Site Survey – Record wind speed at site over time to determine available true wind power**
- **Remote Temperature and Humidity Monitoring**

Description

The ProWeatherStation™ is a high performance wireless data logging weather station with advanced sensor technology resulting in good accuracy at a low cost. It provides instantaneous and historical data on Inside and Outside Temperature and Humidity, Wind Speed (average and gust), Wind Direction, Barometric Pressure and Rainfall. The backlit touch screen controller logs 4080 data points with adjustable (5 minute minimum) sample interval. There is a memory meter on the display that shows when the memory is getting full so the data can be downloaded and archived to a computer thru the built in USB port and included EasyWeather software. The unit has a radio controlled clock (WWVB) for improved accuracy. The controller runs on 3 AA batteries and can be mounted up to 300 feet away from the sensor array. The sensor array runs up to 2 years on 2 AA batteries so there are no worries with mounting the array on top of a building or tower.

The ProWeatherStation™ comes with an advanced sensor array (anemometer, direction meter, temp/humidity sensor, rain gauge, 0.8"OD x 22.5" stainless mounting pole), wireless touch screen controller/display, USB cable for connection to a PC, EasyWeather software and pipe clamps for mounting the sensor array to a mast. Note: 5 AA batteries are required but not included.



Specifications

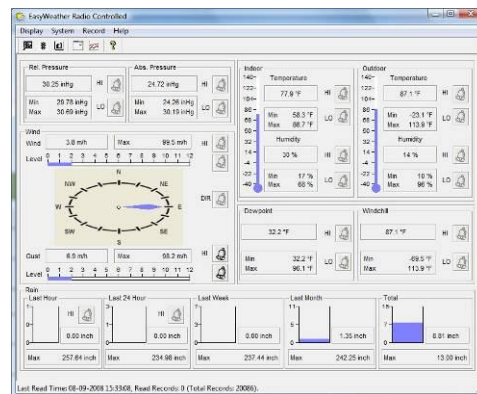
Display Ranges	
Wind Speed	0-100 MPH Accuracy: +/- 1m/s (<10 m/s) +/- 10% (>10 m/s) Displays in mph, m/s, km/h, knots or Beaufort
Outdoor Temperature	-40 to 65°C (-40 to 149°F) 0.1 °C resolution Displays in °C or °F Accuracy: +/-3°C
Indoor Temperature	0 to 50°C (32 to 122°F) 0.1 deg resolution Displays in °C or °F Accuracy: +/-3°C
Humidity	10 to 99% (1% resolution) Accuracy: +/-5%
Rain Gauge	0-9999mm (394 inches) 0.1mm resolution (<1000mm) 1.0mm (>1000mm) Accuracy: +/- 10% Displays in mm or inches (hour, day, week, month or total)
Barometric Pressure	8.85 to 32.5 inHg 0.01inHg resolution Within range 27.13 to 31.89 inHg Accuracy: +/-3 hpa Displays in inHg or hPa
Wind Direction	LCD Compass 22.5° resolution
Wireless Transmitter / Sensor Array	
Operating Frequency	915 MHz
Update Interval	48 secs
Operating Distance	Up to 100 meters (300 feet) between sensor array and controller
Wind Survivability	200 km/h (125 mph)
Construction	UV resistant white thermoplastic and stainless mounting pole
Batteries	2 type AA LR6 2700mAh Alkaline (not included) gives 2 years battery life
Mounting	Pole mount using 2 stainless pole clamps
Controller Specs	
Setup	Touch Screen or Computer
Display	Backlit LCD
Memory Capacity	4080 data samples (memory meter on display)
Computer Interface	USB
Included Software	EasyWeather remote control Windows software
Batteries	3 type AA LR6 Alkaline (not included) gives 1 year battery life
Dimensions (L x W x H)	235 x 146 x 38mm (9.25" x 5.75" x 1.5")
Mounting	Wall or desktop
General Specs	
Settable Alarms	Temperature, Humidity, Wind Chill, Dew Point, Rainfall, Wind Speed, Barometric Pressure, Storm Warning
Alarm duration	Up to 120 seconds
Time Setting	Automatic thru WWVB/DCF or manual
Time Display	12hr or 24hr
Shipping Weight	3.2kg (7lbs)

System Ordering:

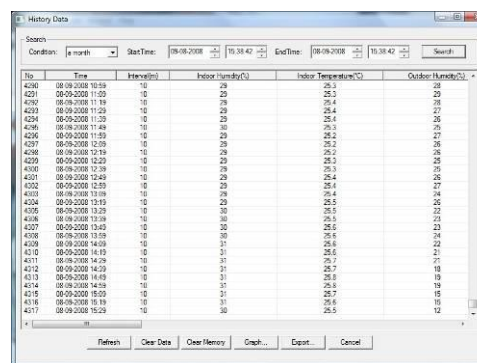
TP1080WC High performance professional data logging wireless weather station

For further information contact: ProWeatherStation.com

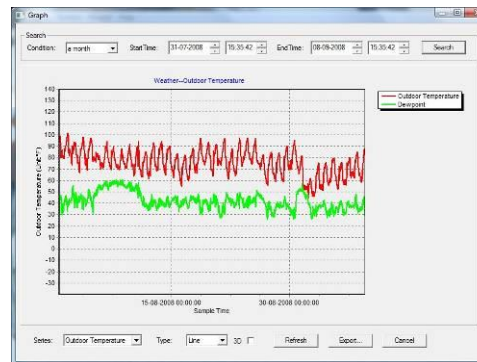
EasyWeather Software



Main EasyWeather Screen



Stored Data in Text Format – can export to Excel



Stored Data in Graph Format

Notes:

- All shipments F.O.B. Draper, UT 84020
- ProWeatherStation™ carries a 1 year warranty
- Some assembly required – Batteries not incl



693 Draper Heights Way Ste 102
Draper, UT 84020
PH: 801-432-0003
FAX: 801-618-4220